

Royal Doulton Figures by Harry Tittensor

Compiled by
Paul Tittensor

FAIR DEALING NOTICE. This site may contain copyrighted material the use of which has not always been specifically authorized by the copyright owner. I have made this material available for educational purposes, to benefit those with an interest in Royal Doulton figures. I believe this constitutes 'fair dealing' of any such copyrighted material as provided for in sections 29 and 30 of the UK Copyright, Designs and Patents Act 1988, material on this site is made available without profit to parties interested in it for research and study purposes.

However, if you wish to have your copyrighted material removed from this site, please contact me.

All material on this website is protected by copyright law. You may link to this site from your site, but please contact me if you wish to reproduce any of this material elsewhere.

Royal Doulton Figures by Harry Tittensor.

Figurines

This table gives a list of Royal Doulton figurines designed by Harry Tittensor from [1].

Piece	Doulton Ref
One of the Forty	HN417 etc
The Mermaid	HN97, HN300
A Gnome	HN319, HN380, HN 381
The Parson's Daughter	HN337, HN338, HN441, HN564, HN790, HN1242, HN1356, HN2018
A Geisha	HN354, HN376, HN387, HN634, HN741, HN779, HN1321, HN1322
Lady and Blackamoor	HN374 , HN375, HN377, HN470
The Little Mother	HN389, HN 390, HN 469
Japanese Fan	HN399, HN 405, HN 439, HN 440
King Charles	HN404 , HN 2084
The Gainsborough Hat	HN46, HN47, HN329, HN352, HN383, HN453, HN675, HN705
A Spook	HN50, HN51, HN58, HN512, HN625
The Land of Nod	HN56
The Little Land	HN63, HN67
Pretty Lady	HN69, HN70, HN302, HN330, HN361, HN384, HN565, HN600, HN763, HN783
Out for a Walk	HN86, HN443, HN748
Princess Badoura	HN2081

I would very much like to hear from you if you have further information on Harry Tittensor or his works.
Please email Paul Tittensor at tittensor@one-name.org.

Royal Doulton Figures by Harry Tittensor



Princess Badoura (HN2081)



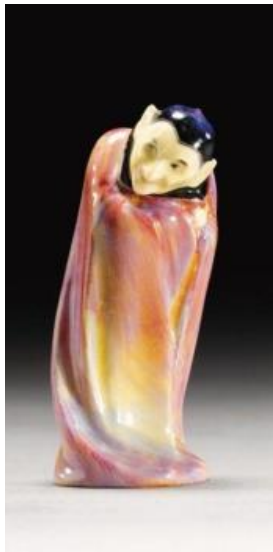
The Parsons Daughter (HN564)



The Mermaid (HN97)



Lady and Blackamoor (HN375)



A Spook
Version 2.0



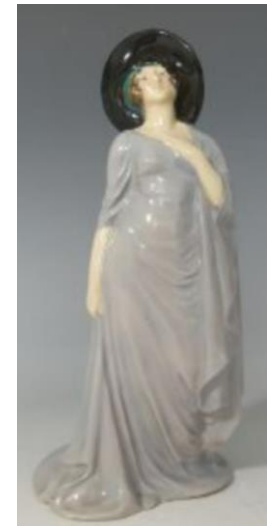
King Charles (HN2084)



Pretty Lady (HN70)



Geisha (HN1292)



Gainsborough Hat (HN707)

27 March 2024

www.tittensor.com

Royal Doulton Figures by Harry Tittensor



The Little Land
(HN63/67)



Land of Nod
(HN4174)



Little
Mother



Japanese Fan



Out for a Walk
(HN748)



One of the Forty (various)



One of the Forty (various)



Gnome (HN382)

Other Royal Doulton Figures by Harry Tittensor



Owl (HN168)



Owl

Royal Doulton Figures by Harry Tittensor.

Figurines

Other figures said to be by Harry on the Invaluable web site but not attributed to him in [1]:

- From their web site, for sale at Bonhams & Goodman (Sydney 18/05/2009): “A rare original conceptual Doulton model for St. George and the Dragon, by Charles Noke and Harry Tittensor, c1920, with St. George carrying his shield on his left arm and his sword in his right hand, richly decorated in striated tones of sang de boeuf, cobalt, buff and green, artist's signatures to base, inscribed to the interior in pencil “original model presented to A.S. by C.J Noke at the Stoke-on-Trent and dated 1939”, damage to right ear of horse, 36.5 cm long, 35.5 cm high. Reference [1] shows the first version of St George (HN385, HN386, HN1800, HN2067) introduced 1920 by S Thorogood. The production model looks the same as the conceptual model. (The Royal Doulton Animals book [2] gives a name for both the designer and the modeller, maybe this is the distinction here too?).
- From the Invaluable web site: HN95 Europa & the Bull was designed by Harry Tittensor and signed by Tittensor & Noak. Reference [1] says HN95 (first version model 201) was introduced in 1918 and designed by EW Light.
- From the Invaluable web site: HN2042 Owd Willum (sold Cannon & Cannon, S Africa 2006) said to be designed by Harry Tittensor. Reference [1] says designer L Harradine.
- From the Invaluable web site: A rare Royal Doulton figure of Guy Fawkes, H.N. 445, inscribed on the base Guy Fawkes, H. Tittensor, potted by Doulton and Co, HN445 10.5in. blue/ green cloak. See illustration and colour on back cover. Wright-Manley lot 431. Reference [1] says designer CJ Noke.

Royal Doulton Figures by Harry Tittensor.

Other Figures

- Barn Owl (HN169) [2]
- Owl. For sale by auction, King & Orme, Evesham 03/12/20.

References

[1]. "Royal Doulton Figures produced at Burslem, Staffordshire 1892-1944" by Desmond Eyles, Louise Irvine & Valerie Baynton, 3rd edition, pub. Richard Dennis, 1994.

[2]. "Royal Doulton Animals: A Charlton Standard Catalogue" by Jean Dale, Charlton Press, 3rd edition, 2003.

I would very much like to hear from you if you have further information on Harry Tittensor or his works. Please email Paul Tittensor at tittensor@one-name.org.